

**CLUB OFFICERS**

**PRESIDENT:**

Lee McDurmont

**VICE PRESIDENT:**

Russell Roark

**TREASURER:**

Theresa Williams

**RECORDING SECRETARY:**

Gayle Roark

**CORRESPONDING**

**SECRETARY:**

Howard Crawford

**NEWSLETTER EDITOR:**

Don Rogers

**BOARD MEMBERS:**

Bonnie Abler 2022-2024

Peggy Crawford

2022-2024

Bruce Williams

2021-2023

Mike Huber 2021-2023

Charlie Walters

2020-2022



**EARLY FORD V-8  
CLUB**

**ON THE ROAD**

**ST. LOUIS R.G. #124**

**February 2022      Volume 37 No. 2**

**INSIDE THIS ISSUE**

- Page 2:            Presidents Message
- Page 3:            Editor's Page
- Pages 4: & 5:    Branson Run 2001 Revisited
- Page 6:            Blast From The Past (Child Safety)
- Pages 7: & 8:    Post War Mini—Car Boom
- Page 9:            2022 Eastern Meet Notice
- Page 10:          Birthdays & Anniversaries



Perhaps He Should Read The Clearance Sign Again!!!!

# President's Message

**By Lee McDurmont**

Greetings everyone!

While I have met many of you, some may not know me or my wife Laura. We've been married 28 years, and have two adult (in age) children. Our son Evan, is a diesel mechanic, and has attended a few events. Our daughter Emma is currently a grad student, studying locally for psychology and counseling.

I'm relatively new to the group, I think I joined 4 years ago. Please bear with me as I learn the "ropes".

As everyone knows we're struggling with covid to be able to gather and meet. One activity we can participate in, with just our families, is the National Drive Your V-8 Day on Saturday June 18th. I have a link to more information below.

Hopefully we'll be able to meet in person long before that, Stay tuned to our newsletters, and to our clubs website <https://stlv8club.org/> for information.

I haven't spoken with the club's leaders, but given the current state of health in the STL area, I believe we should hold off on the February in person meeting.

I'll be meeting with the leadership for planning out the year. Please reach out to myself, Laura or any of the Club's leadership if you have any questions, concerns, or would like to host a meeting or event.

The information about the national drive your V8 day and the Eastern Meeting, below can be found here: [https://www.earlyfordv8.org/Upcoming\\_Events.cfm](https://www.earlyfordv8.org/Upcoming_Events.cfm)



Laura and Lee McDurmont



Lee, Laura, Emma and Evan

I'm sure that I speak for everyone in the Club, when I welcome our new President and First Lady, Lee and Laura McDurmont. One of Lee's first priorities will be working on a calendar of events for this year. We may get a break for a change and be able to schedule in person events as the new Omicron cases continue to fall.

While Lee and the Club's officers struggle with planning for a full calendar for 2022, Russell and Gayle Roark have relaunched the "First Saturday" breakfasts starting this Saturday, Feb. 5th at the Village Café. (see details on page 8)

The Registration forms have started to be mailed out for The Eastern National Meet in Franklyn, TN. this June. Please see the flyer in this month's Newsletter. It promises to be a great event!



**A Rare Sight For Bird Watchers....A Falcon Nesting In A Tree**

# BRANSON RUN 2001



What we all came for!



And this too!!



Peggy and Howard having even more fun!



The highly esteemed President of RG #124



That's Don Taylor behind the camera. He probably worked the hardest (150-200 cars) but perhaps enjoyed it the most --- seeing ALL the cars....  
"up close and personal"



Let's see... It appears the nametag says "Ron Dodgers" from "Baldwin, Mississippi"? - or something like that. The young lady's name tag doesn't show but it MUST be his daughter!



Two "lovelies" --- Gayle Roark and a '48 Convertible! But both "spoken for"! Gayle is relaxing after judging the '49-'53 Mercs.



And families too...future V-8ers & V-Eaters



V-Eaters like this happy group



Upscale dining at the *Uptown Cafe* for the ladies!



“Rub-a-dub-dub, Three gals in a tub” ---oops!  
wrong photo!



Ahhh, there's **THE PHOTO!** Howard's first look at it. He's smiling...must be a good one!

# Blasts From The Past ??

## Child Safety Through The Years...Or Not!!!

**Nash Thought of the Children, too,  
in the World's Finest Travel Car!**



**He'll be in kindergarten**

**WHEN HER RAMBLER NEEDS ITS FIRST CHASSIS LUBRICATION**

He's two. The Rambler's brand-new. He'll be five, most likely, and riding to kindergarten, when the Rambler Classic needs its first lube job\*. Meanwhile, it will travel twice as far between engine oil changes as any previous model.

In high school, if he drives this Rambler, it will still have the same Ceramic-Armored muffler and tailpipe. (Should

either rust out, collision damage excepted, free replacement for the original owner will be made by a Rambler dealer. That's guaranteed.)

Sound like the car of a lifetime? It is. The starter and generator are lubricated for life. Rambler Single-Unit construction, with its hundreds of extra welds, stays remarkably free from squeaks and rattles.

And Deep-Dip rustproofing, right up to the roof, makes Rambler the world's most rustproofed car.

Someday there may be a completely service-free car that lasts forever. Today Rambler comes closest. Come get the full story from your Rambler dealer.

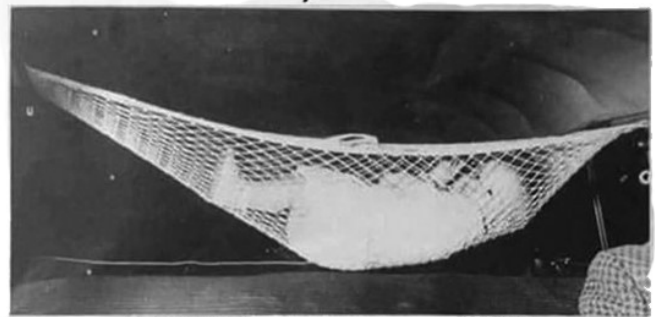
\*Chassis lubrication lasts 3 years or 33,000 miles which ever comes first.

**RAMBLER**

*American Motors Means More For Americans*



**Keep Baby SAFE with  
a "Lull-A-Baby" Car Hammock**



• Baby constantly visible; rear view vision not impaired.

**SAFEST, MOST COMFORTABLE CAR BED  
EVER MADE**

**FITS ANY HARDTOP CAR  
ONE-MINUTE INSTALLATION**

YOU CAN PURCHASE A "LULL-A-BABY" CAR HAMMOCK FROM YOUR LOCAL DEALER OR PURCHASE IT AT 518 Lighthouse Avenue, Monterey, California.

**RETAILS FOR ONLY**

**\$ 6<sup>95</sup>**

on the Monterey Peninsula.

# AMERICAS POST WAR MINI - CAR “Boom”

( Article Courtesy of Early Ford Update Queensland RG 157 July 2021)

**Robert D. Cunningham** has written a series of articles on the mini car makers in the period immediately following World War Two, for “the old motor.com”.

Here I have attempted to precis two of these informative articles to give our readers some idea of these unusual small vehicles. Britain had been manufacturing, very successfully, mini cars like the Austin 7 and Morris Cowley, for many years. The USA had their big - engine vehicles, but as Robert points out, things at the end of the war were different.

“In 1945, just as Americans began to revert from wartime production to a consumer-driven economy, Michigan labour unions organised a massive strike that soon shut down General Motors. Parallel strikes in the steel and coal mining trades brought the number of striking workers to 3 million, and an impasse effectively halted the automobile industry. The car-starved public’s demand for something, -anything- new, fuelled hopes within independent entrepreneurs with big ideas about small cars.”

One such person was S.A. Williams, a restaurateur, who had built his son Bobbi, a small rear engine car during the war. Neighbours wanted him to build something for their children, so he sold up his businesses and partnered with ex Chrysler employee, John Liefeld, he set about producing his \$500 Bobbi-Kar.

“A car to fill a need”. His son’s car was too crude for mass production, so they wanted to build something “smaller and lighter than an army jeep, that will travel as fast as any other car but will only use a gallon of gas for 50 miles”.

Production models were to have plastic body panels mounted to an inner structural body. The rear mounted drive assembly was designed for quick replacement. The differential, transmission, clutch, flywheel, and engine were combined in a single unit. When the prototype was unveiled the public deemed it too toy-like,





**BOBBI-KAR** THE URBAN SEDAN — Stylish enough to travel in the best company — country club — golf — etc.

Never before such nation-wide acclaim... for a new car!



The Only QUALITY car in the Low Price Field!

**Surprising Economy!**  
40 miles to the gallon of gas — not better than 60 miles per hour!

4 Cylinder 40 H.P. Engine is mounted between rear wheels

Wheelbase 92 inches

Overall Length 12 Feet 8 inches



**BOBBI-KAR** BOBBI-KAR SEDAN — It is beautifully styled and so easy it provides complete comfort for all passengers.



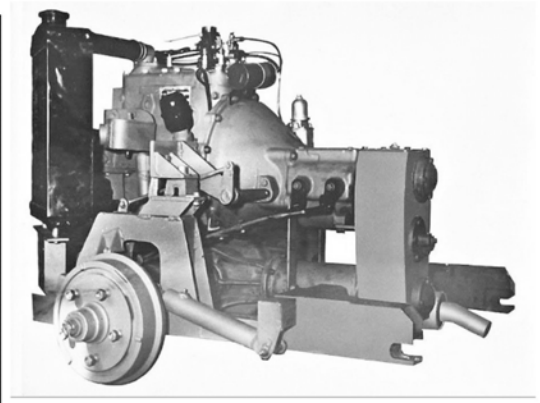
**BOBBI-KAR** THE STATION WAGON — Especially convenient for those long, hard trips — and still give maximum comfort.



**BOBBI-KAR** CONVERTIBLE SPORTS ROADSTER — Designed for comfort and beauty as well as utility. The roomy interior is handsomely upholstered in leather type covering.



**BOBBI-KAR** SPORTS ROADSTER — With top mounted. Above illustration shows the convertible sports roadster with the steel top — which can be installed instantly — just rear latches does it.



so undeterred, Williams set about building larger models on various body styles. Dealers all over were anxiously awaiting the models when things suddenly came to a halt when investors found out that Williams had been previously convicted of “shady

dealings”, and as a result, could not be a company director.

George Keller, also a director of the company, purchased the entire operation, repaid all the deposits on undelivered cars, dissolved the network and began to rebuild under the Keller Motors Corporation banner. Keller is another story along similar lines. Despite lots of promises and much cash, he only produced 18

vehicles before his death brought an end to production. His wood body station wagon is claimed to be the beginnings of our SUV designs. *More about him next month-Ed.*

Meanwhile, undeterred, Williams launches another small car project, the Towne Shopper in December 1947. His newly formed International Motor Company, planned to build a 270kg convertible coupe priced at \$595. The majority of the car was to be constructed from the “new” aluminium. Although he launched the car as an all-new vehicle, in fact it was his original Bobbi-Kar which he had built for his son in 1942. He replaced the engine with an Onan generator engine which had integral flywheel, starter, generator, mounted on rubber mated to a Mercury automatic clutch and Cushman 2 speed transmission. The combination achieved 50 mph and a fuel economy of 50 mpg. Onan promised to deliver 30,000 engines for 1948. The car body was replaced with a Jeep-like body with folding top, doorless sides and an open package compartment like a pickup bed but in the front. He introduced the Package car as the International Towne Shopper. Careful to not attract the attention of the Securities and Exchange Commission, he spruiked his prototype as being financed from his own fortunes.



He did however then sell out to J.D Carter who continued with the project as the Harvey Towne Shopper. (A Mr Harvey supplied the dollars). Due to increasing production costs he modified the car to a steel body and smaller 7hp engine with a top speed of 40mph. The car was marketed as “ideal for the ladies and an economical solution to your family’s transportation problems.”

In 1949 the car underwent a redesign which critics considered somewhat less attractive. Several models were offered including a 3 passenger Sportster Convertible. Prices jumped to \$750. After promises to dealers of 100 cars per day by January 1949, Carter ran out of operating capital and shut the entire operation down by Christmas 1948. Dealers were left with no cars to deliver and felt they had been taken for a ride. Williams, the founder, was convicted for operating a counterfeit currency ring that distributed fake \$20 bills.

## The Small Car with a Thousand uses..

TO FILL THE NEEDS OF A MILLION AMERICANS

For a Really All Purpose • Practical • Dependable • Economical Car



### HOLIDAYS FAMILY USE

The Towne Shopper will take the family on picnics, outings and visits economically and efficiently. It is easily driven by any member of the family.



### PASSENGER PICKUP

The Towne Shopper is the perfect solution for picking up guests at the railway station or bus terminal. Its luggage compartment is generous enough to hold many bags.



### TO WORK

The Towne Shopper is excellent for the family head who must drive to work. It is easily parked in considerably less space than a regular automobile.



### ERRANDS

The many everyday errands that face busy housewives is not a problem when she has a Towne Shopper. It will take her to neighbors, the beauty parlor, the doctor or dentist, church and group meetings, while the family automobile is being used by the husband.



### SHOPPING

The Towne Shopper is the perfect answer to the shopping problem. With more than ample space for packages, and parcels. Parking is not a serious problem for the Towne Shopper.



### COMMERCIAL USE

The Towne Shopper is an ideal spare office car or light pickup and delivery wagon. Its economy and short wheelbase make it pay big dividends for a small investment.

were offered including a 3 passenger Sportster Convertible. Prices jumped to \$750.

After promises to dealers of 100 cars per day by January 1949, Carter ran out of operating capital and shut the entire operation down by Christmas 1948. Dealers were left with no cars to deliver and felt they had been taken for a ride.

Williams, the founder, was convicted for operating a counterfeit currency ring that distributed fake \$20 bills.

*Next time we will visit the Keller and Del Mar stories- Ed.*



# The 2022 Eastern National Meet

## Franklin, Tennessee

### June 1-5, 2022

Please join us in Tennessee!

The 2022 Eastern National Meet promises to be a great time for everyone. For the first time since 2019 Early Ford V-8 enthusiasts from all over the country are encouraged to come together in the Nashville area for a traditional national meet.

Several events are being planned, including a tour to the Leiper's Fork and Distillery, the Grand Ole Opry on Friday night after judging and also a special ladies event on concourse day. .

While in the Nashville area, be sure to leave yourself time for touring on your own. Historic downtown Franklin has plenty to do and see and is just a short 5-mile drive from the meet hotel. For those who want to venture farther, downtown Nashville is about a half-hour drive. If your touring takes to the "new" Grand Ole Opry, a visit to the adjacent Gaylord Hotel is a destination in itself. Consider also the Country Music Hall of Fame and Museum, the Parthenon in Centennial Park, the Ryman Auditorium and the honky tonks on Broadway, to include Tootsie's Orchid Lounge, for a visit.

The meet itself will have all the activities you have come to expect, from the raffle room, to a memorabilia room, to an indoor swap meet and a place to clean up your vehicle. There will be a meet and greet on Wednesday with light snacks. In addition to seminars, on Thursday there will be an Early Ford Foundation meeting, Meet the President, and owners/judges meetings followed by a more formal welcome party.



**For more information please go to**

Website: [2022enm.com](http://2022enm.com)

or to

Email: [registration@2022enm.com](mailto:registration@2022enm.com)

## Future Events:

**SATURDAY, 5th OF FEBRUARY**– Breakfast at 8 AM at Village Café, Just off Hwy 64 at Hwy N across the street from Walmart. 636-561-0235

**Let Russell or Gayle know if you can make it.**  
636-398-5089 or raroark@att.net



**This Monthly Meetings... Temporarily On Hold**  
**We should be able to begin scheduling Soon!!**  
**Signup sheet and directions will be in the**  
**March Newsletter.**

## February

### Birthdays & Anniversaries

- 4 Peter Brown
- 5 Alice Schott
- 13 Harold Walters
- 25 Ron Dunket
- 28 Huber Anniversary (1987)



**FIRST CLASS MAIL**



Don Rogers, Editor  
The Early Ford V-8 Club of America  
St. Louis Regional Group #124  
422 Gunnison Gorge Dr  
Wildwood, MO 63011-1738

**St. Louis R.G. Web Site**

<https://stlv8club.org/>

## NOTES

- Cars are FORDS unless otherwise named.
- **YEAR** in parentheses after name(s) indicates year member joined *RG #124*.
- Some Members with Ford Flatheads may also have other collector cars and some Members have non-Flathead Fords and other collector cars – in the interest of space, these vehicles are not listed.

## PAST PRESIDENTS

1986-87: Don Rogers  
1988-89: Howard Crawford  
1990: Russell Roark  
1991: Bruce Williams  
1992-93: Russell Roark  
1994: Jim Gosnell  
1995: Don Rogers  
1996-97: Mike Huber  
1998-99: John Walters  
2000: Doug Williams [dec.]  
2001: Paul Renaud  
2002-03: Larry Carroll  
2004: George Ball  
2005-06: Joe Viviano [dec.]  
2007-08: Don Toeniskoetter  
2009-2010: Russell Roark  
2011: Marty Canada  
2012-2013: George Ball  
2014-2015: Larry Shepard  
2016-2018: Bruce Williams  
2019: Mike Huber  
2020-2021: George Ball|  
2022: Lee McDurmont

## 2022 OFFICERS

[**YEAR** indicates year **first elected**]

**President:** Lee McDurmont  
[2022]

**Vice-President:** Russell Roark  
[2021]

**Treasurer:** Theresa Williams  
[2017]

**Record. Sec:** Gayle Roark– [2021]

**Corr. Sec:** Howard Crawford [2018]

**Newsletter Ed:** Don Rogers [2020]

## 2022 DIRECTORS

[**YEAR** indicates **END** of current term of office]

Bonnie Abler [2024]

Peggy Crawford [2024]

Charlie Walters [2022]

Mike Huber [2023]

Bruce Williams [2023]

## NATIONAL EFV8CA REGIONAL DIRECTOR:

Steve Kroeger

## 1985 Founding Charter Members

**Jay Canada** (deceased)

**Howard Crawford**

**Don Rogers**

**Bob Selby** (deceased)

**Joe Viviano** (deceased)

**Dick Wezeman**  
(deceased)



## EFV8CA ST. LOUIS REGIONAL GROUP #124

## 2022 Roster (As of January 16, 2022)

## 70<sup>th</sup> Anniversary of the 1952 Fords



1952

Owned by Bruce & Theresa  
Williams

**Abler, Bonnie (1994)**

5901 Mastodon Pines Drive  
Imperial, MO 63052-2215  
314-520-6491 (Cell)  
[bonnieabler@icloud.com](mailto:bonnieabler@icloud.com)

**Aumann, Ray & Carolyn (2007)**

2560 Reav-Tel Court  
St. Louis, MO 63125-3606  
314-892-7893 (Home)  
314-620-7989 (Cell)  
[rayaum@charter.net](mailto:rayaum@charter.net)

- '32 Tudor – Deluxe (18-70B)

**Ball, George (1997)**

10107 Fabius Drive  
Lake St. Louis, MO 63367  
314-202-3240 (Cell)  
[george35ball@gmail.com](mailto:george35ball@gmail.com)

**Brauer, Stephen & Camilla (2021)**

111250 Hunter Dr.  
Bridgeton, MO 63044  
314-731-5101  
314-753-1781 (Cell)  
[sfbrauer@hunter.com](mailto:sfbrauer@hunter.com)

**Brown, Peter & Christy (2006)**

102 Lake View Ridge  
Washington, MO 63090-9009  
636-239-0519 (Home)  
904-608-2522 (Cell)  
[brownv12@charter.net](mailto:brownv12@charter.net)

- '36 Cabriolet (68-76A)

**Carroll, Maxine (1992)**

1609 Polar Dr.  
Wentzville, MO 63385-3357  
636-327-4331  
[Maxine4331@gmail.com](mailto:Maxine4331@gmail.com)

**Conrad, Dave & Jan (1998-2002) (2015)**

13268 Twin Lakes Drive  
Kirkwood, MO 63122-6626  
636-861-7376 (Home)  
314-960-2147 (Cell)  
[conrad32@gmail.com](mailto:conrad32@gmail.com)  
[dochiboy@aol.com](mailto:dochiboy@aol.com)

- '32 Roadster Deluxe (18-71A)
- '32 4-door Deluxe
- '32 3W Coupe Deluxe(18-72A)
- '36 3W Coupe Deluxe(68-72A)
- '40 Bus.Coupe Deluxe(01A-72B)

**Crawford, Howard & Peggy (1985)**

2165 Wide Oak Court  
Chesterfield, MO 63017-7226  
636-532-5636 (Home)  
314-303-7630 (Howard's Cell)  
314-307-8839 (Peggy's Cell)  
[hduce@aol.com](mailto:hduce@aol.com)

- '36 3W Coupe Deluxe R/S(68-72B)

**Davis, Dick (2001)**

Park Place at Winghaven  
2002 Boardwalk Place Drive  
Apt. 113  
O'Fallon, MO 63368  
[r.bdavis813@gmail.com](mailto:r.bdavis813@gmail.com)

**Decker, Dave & Barbara (2011)**

11084 Littie  
St. Louis, MO 63126  
314-775-1513 (cell)  
[3huntersandme@sbcglobal.net](mailto:3huntersandme@sbcglobal.net)  
➤ '49 Mercury M47 Pickup (C9M-80A)

**Drennan, Tom & Joy (2006)**

2491 Hartland Avenue  
St. Louis, MO 63114-5033  
314-423-9394 (Home)  
314-570-5057 (Cell)  
[drennan51@yahoo.com](mailto:drennan51@yahoo.com)  
➤ '49 F-2 Pickup (8A-80A)

**Dunker, Ron (1986)**

2309 Cranston Rd.  
Letts, IA 52754  
319-726-3369 (Iowa)  
309-313-3369 (Cell)  
➤ '35 Pickup – Standard (48-80A)  
➤ '39 Tudor – Standard (91A-70A)  
➤ '39 Coupe – Deluxe (91A-77B)  
➤ '40 Convertible Coupe (01A-760)  
➤ '48 Stakebody Truck (89A-93A)  
➤ '48 Coupe – Deluxe (89A-77B)  
➤ '49 Club Coupe – Custom (8A-72B)  
➤ '51 Mercury Sport Coupe (1M-72B)

**Hagan, Terry & Sharon (2009)**

#2 New Melle Drive  
Wentzville, MO 63385-6309  
636-398-4343 (Home)  
314-853-4196 (Terry's Cell)  
314-853-4994 (Sharon's Cell)  
[thagen1957@gmail.com](mailto:thagen1957@gmail.com)

- '35 3W Coupe – Modified (48-72x)

**Hartnagel, Al & Barb (1997)**

813 Wheatridge Court  
Defiance, MO 63341-2015  
636-798-2149 (Home)  
314-808-0922 (Cell)  
[albarbh@centurytel.net](mailto:albarbh@centurytel.net)

- '40 5W Coupe – Deluxe (01A-72B)

**Hauschultz, Jim & Anene (2019)**

519 Angenette Ave.  
Kirkwood, MO 63122  
314-966-6404 (Home)  
314-497-7544 (Cell)  
[hauschultz@sbcglobal.net](mailto:hauschultz@sbcglobal.net)  
➤ '35 Ford 5W Coupe

**Henerey, Charlie (2016)**

412 Medina Drive  
Warson Woods, MO 63122  
314-821-1876 (Home)  
314-520-1576 (Cell)  
[chenerey@swbell.net](mailto:chenerey@swbell.net)

- '36 Touring Sedan

**Huber, Mike & Diane (1986)**

207 South Barat Avenue  
Ferguson, MO 63135-2121  
314-522-0972 (Home)  
314-650-2520 (Cell)

[midipadahuber@att.net](mailto:midipadahuber@att.net)

- '40 Tudor – Deluxe (01A-70B)
- '49 8N Tractor (45A)
- '50 Tudor – Custom Deluxe (0A-70B)
- '53 Tudor – Customline Deluxe (BF-70B)

**Klein, Bill & Lissa (1998)**

10592 Hobday Avenue  
St. Ann, MO 63074-3724  
314-428-1551 (Home)

[wmgkle@swbell.net](mailto:wmgkle@swbell.net)

- '26 Ford Roadster
- '50 Mercury Club Coupe (0M-72B)

**Lemen, Bob & Faye (1989)**

8441 Midland Blvd.  
Charlack, MO 63114-5913  
314-426-3566 (Home)  
314-570-0488 (Cell)

- '33 Pickup Truck (40-80A)
- '34 Tudor (40-70A)
- '36 (3) 5W Coupes (68-77B)
- '48 Coupe – Deluxe (89A-77B)
- '48 F-47 (1/2-Ton) Panel Delivery (89A-80C)
- '50 F-1 Panel Delivery – Standard (0A-80C)
- '50 F-1 Pickup Truck – Standard (0A-80A)

**McDurmont, Lee & Laura (2018)**

4 Rainfield Ct.  
Ballwin, MO 63021  
314-422-4821 (Lee)  
314-623-8843 (Laura)

[mcdurml@gmail.com](mailto:mcdurml@gmail.com)

[laura.mcdurmont@gmail.com](mailto:laura.mcdurmont@gmail.com)

- '46 Ford Coupe (77B)

**Roark, Russell & Gayle (1986)**

4286 Hueffmeier Road  
Wentzville, MO 63385-6511  
636-828-5614 (Home)  
636-398-5089 (Cell Russell)  
314-520-7245 (Cell Gayle)

[raroark@att.net](mailto:raroark@att.net) (Russell)

[groark@att.net](mailto:groark@att.net) (Gayle)

- '40 Coupe Deluxe(01A-77A)
- '50 Sedan Custom (0A-70x)
- '50 Conv. Custom Deluxe (0A-76B)

**Rogers, Don (1985)**

422 Gunnison Gorge Drive  
Wildwood, MO 63011-1738  
636-458-0250 (home)

[convV8@aol.com](mailto:convV8@aol.com)

- '35 Convertible Sedan – Deluxe (48-74B)
- '35 Panel Delivery – Standard (48-80C)
- '51 Mercury Convertible (1M-76B)

**Schmid, John & Debbie (1995)**

262 Gentry Drive  
O'Fallon, MO 63366-4370  
636-240-4976 (Home)

[jjds318@yahoo.com](mailto:jjds318@yahoo.com)

- '49 Mercury Woodie Wagon (9M-79A)

**Schott, Bert & Alice (2013)**

14628 Big Timber Lane  
Chesterfield, MO 63017  
636-519-0431

[bschott636@gmail.com](mailto:bschott636@gmail.com)

- '50 Conv. – Custom (0A-76A)

**Shepard, Larry & Gina (1986)**

1706 Brookline Drive  
St. Charles, MO 63303-4654  
636-947-4515 (Home)  
636-734-5510 (Cell)

[mlshpard@aol.com](mailto:mlshpard@aol.com)

[larry@promotionsforyou.net](mailto:larry@promotionsforyou.net)

- '40 Conv. Coupe – Deluxe (01A-76A)
- '40 5W Coupe – Standard (01A-77A)
- '48 Sedan Cpe – Super Del. (89A-72B)

**Smith, Chris & Kim (2020)**

58 Aberdeen Place  
Clayton, MO 63105  
314-517-2162 (Cell)

[chris.smith@huschblackwell.com](mailto:chris.smith@huschblackwell.com)

- '36 Phaeton

**Stirnemann, Cathy (1986)**

7655 Watson Rd. Apt 327  
St. Louis, MO 63119  
314-591-0281 (Cell)

- '32 Roadster (18-71A)
- '32 Roadster (18-71A)
- '34 3W Coupe (40A-72B)

**Swoboda, Seth & Nicole (2016)**

18824 State Route 15  
Nashville, IL 62263  
618-521-1170 (Cell)

[swobodaseth@hotmail.com](mailto:swobodaseth@hotmail.com)

(Seth)

- '39 Pickup (91A-80A)
- '40 Tudor – Standard (01A-70A)
- '46 Coupe – Super Deluxe (69A-77B)
- '47 Tudor – Deluxe (79A-70A)

**Taylor, Don & Rosie (1986)**

1011 West Corrington Street  
Mascoutah, IL 62258-1021  
618-566-2529 (Home)

618-971-9665 (Don's Cell)

618-570-8225 (Rosie's Cell)

[rdtaylor7@charter.net](mailto:rdtaylor7@charter.net)

(Don's)

[rdtaylor1@charter.net](mailto:rdtaylor1@charter.net)

(Rosie's)

- '49 Fordor – Custom (8A-73B)

**Toeniskoetter, Don (2005)**

10 Parkview Court  
St. Peters, MO 63376-2903  
636-387-1419 (Home)  
'46 Business Coupe (69A-72C)

**Walters, Charles (1998)**

12504 Ardwick Lane  
Apt. A  
St. Louis, MO 63146  
314-346-8696 (Cell)  
[charleswalters@charter.net](mailto:charleswalters@charter.net)

**Walters, Harold & Judy (2008)**

323 Carrollton Lane  
St. Louis, MO 63135-1227  
314-521-3226 (Home)  
314-853-4934 (Cell)  
[hjw323@sbcglobal.net](mailto:hjw323@sbcglobal.net)  
➤ '47 Sedan Coupe – Super  
Deluxe (79A-72B)

**White, Claudette (1996)**

15 Hilltop Village Ctr. #110  
Eureka, MO 63025  
636-390-4739 (Home)  
636-359-1348 (Cell)  
[claudewh@hotmail.com](mailto:claudewh@hotmail.com)

**White, Doug & Joni (2017)**

20 Eagles Landing Drive  
St. Peters, MO 63376  
314-541-8500 (Cell)  
314-223-0372 (Cell)  
[dj1white87@gmail.com](mailto:dj1white87@gmail.com)  
➤ '51 Fordor – Custom Deluxe  
(1A-73B)

**Williams, Bruce & Theresa  
(1986)**

1487 Wilton Lane  
Kirkwood, MO 63122-6942  
314-452-7571 (Bruce's Cell)  
[bbwilliams1487@gmail.com](mailto:bbwilliams1487@gmail.com)  
[williams.tm77@gmail.com](mailto:williams.tm77@gmail.com)

- '32 Victoria (18-74A)
- '46 Merc. Sedan Coupe –  
Del. (69M-72B)
- '52 Pickup (BA-80A)
- '53 Tudor Mainline Ranch  
Wagon (BF-59A)

**PAST MEMBERS:**

**Bauer, Pat (1988)**

5 Bauer Lane  
O'Fallon, MO 63366-1132  
636-978-3481 (Home)

**Bauer, Suzette McPhail**

1452 Timberlake Manor  
Chesterfield, MO 63017-5580  
636-537-4070 (Home)  
314-277-1677 (Cell)

**Canada, Marty (1986)**

Park Place at Winghaven  
2002 Boardwalk Place Dr.  
Apt. 120  
O'Fallon, MO 63368-7155  
636-561-6079 (Home)  
314-487-1678 (Cell)  
[mecanada735@gmail.com](mailto:mecanada735@gmail.com)

**Grebing, Glenn & June (2011)**

935 High Ridge  
Columbia, IL 62236  
618-281-3996 (Home)  
314-852-7778 (Cell)  
[ggrebing@htc.net](mailto:ggrebing@htc.net)

**Gosnell, Jim**

107 Dove Circle  
Cadiz, KY 42211-6136  
[jim6277@gmail.com](mailto:jim6277@gmail.com)

**Harper, George & Betty (2007)**

Park Place at Winghaven  
2002 Boardwalk Place Dr.  
Apt. 306  
O'Fallon, MO 63368  
636-627-9156 (George's Cell)  
636-856-3709 (Betty's Cell)

**Henry, Vicki (2011)**

1624 Ansonborough Drive  
Chesterfield, MO 63017-5645  
314-440-4818 (Cell)  
[vickih9@gmail.com](mailto:vickih9@gmail.com)

**Krause, Marion (2016)**

433 Baker Avenue  
Webster Groves, MO 63119  
314-962-1997 (Home)  
314-882-2545 (Marion's Cell)  
[mariankrause@att.net](mailto:mariankrause@att.net)

**Meier, Vicki (1993)**

2002 Boardwalk Pl. Dr.  
O'Fallon, MO 63368-7159  
636-561-6484 (Home)

**Muntzing, Jerry & Nancy  
(2012)**

2403 Golden Bear Way  
Wentzville, MO 63385  
636-327-3937 (Home)

**Renaud, Paul (1996)**

12 Bordeaux Place  
Lake St. Louis, MO 63367  
314-660-1975 (Cell)  
[renaud7207@outlook.com](mailto:renaud7207@outlook.com)

**Smith, Louise**

2180 Lundy Drive  
Florissant, MO 63031-7642  
314-895-3416 (Home)

**Tancock, Connie**

9626 Trinidad Lane  
St. Louis, MO 63126  
314-842-5192

**Viviano, Carmen (1985)**

15706 Trapp Ridge Court  
Chesterfield, MO 63017-8742  
636-484-4202 (Carm's Cell)  
636-532-3934 (Home)  
[carmvivian@sbcglobal.net](mailto:carmvivian@sbcglobal.net)